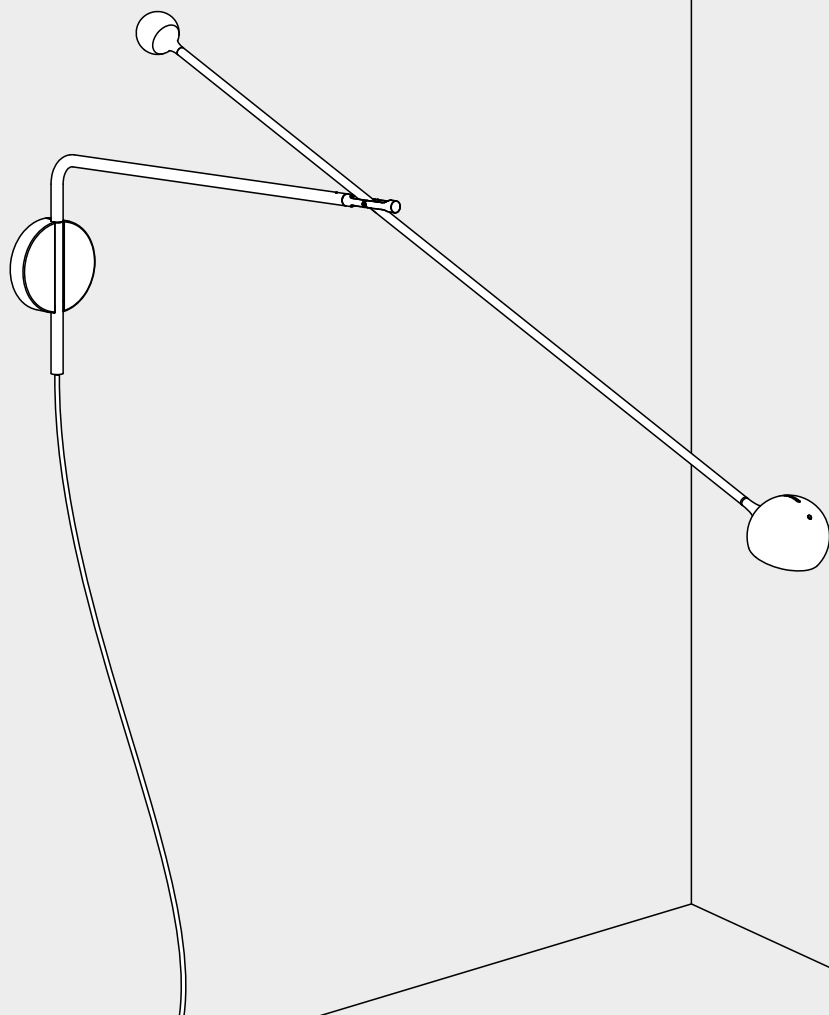


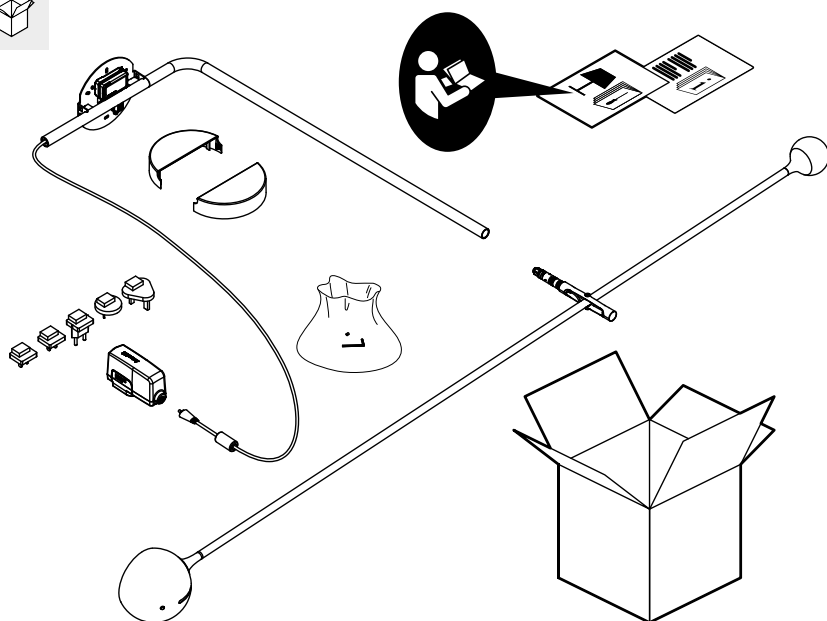
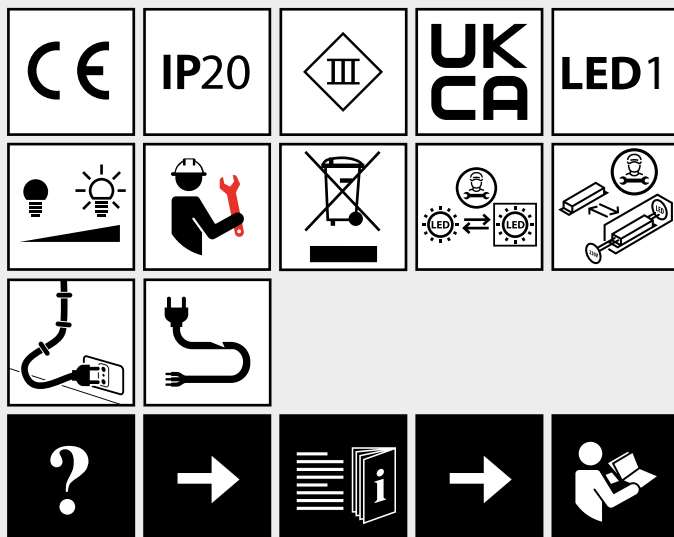
IXA XL WALL PLUG

design
Foster + Partners
Industrial Design

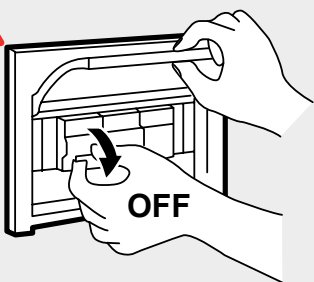
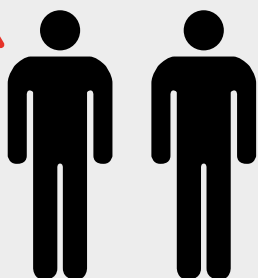
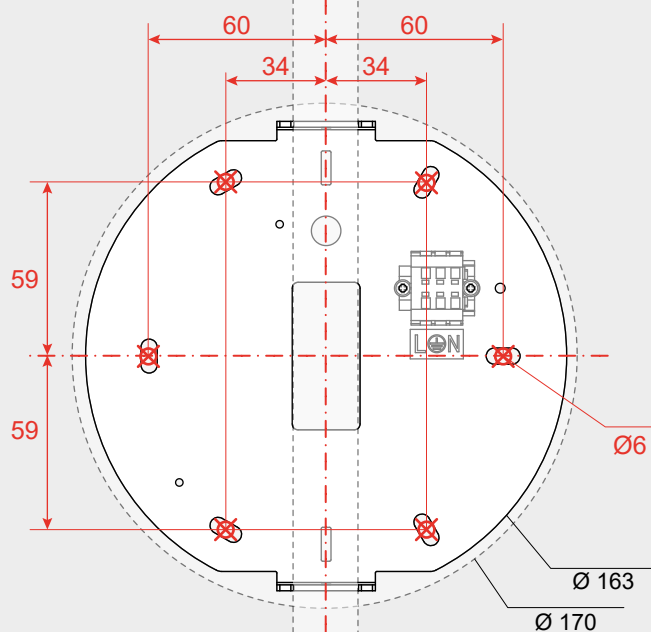




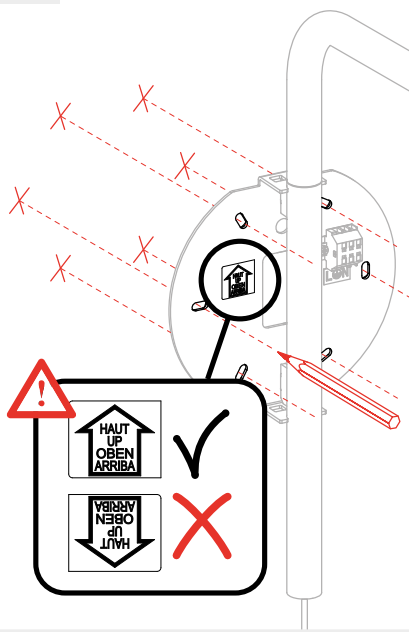
i



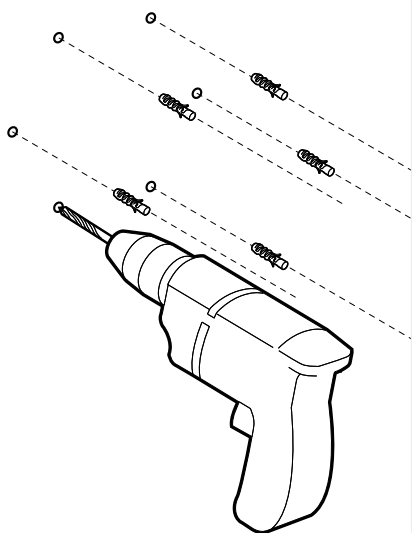
i



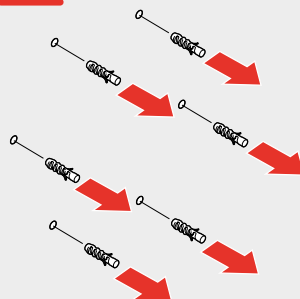
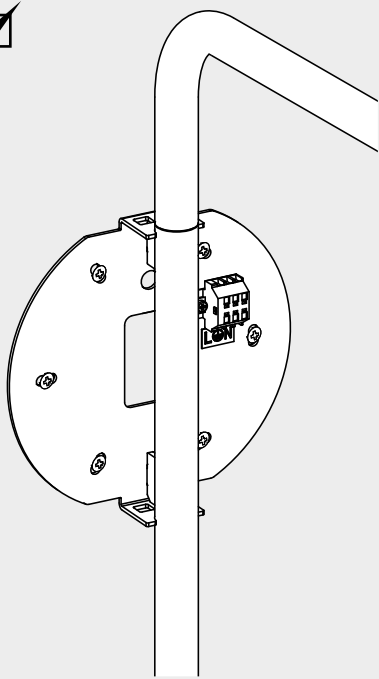
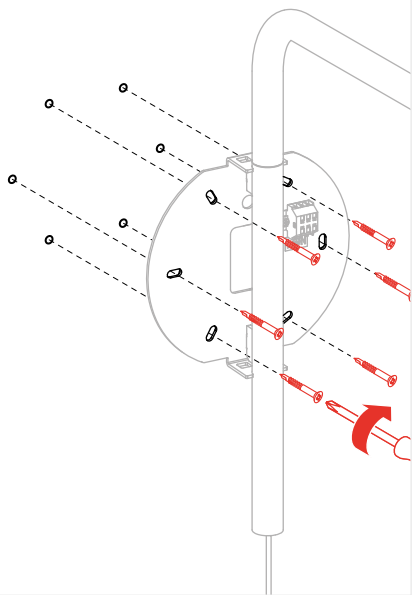
1



2



3



WORLDWIDE



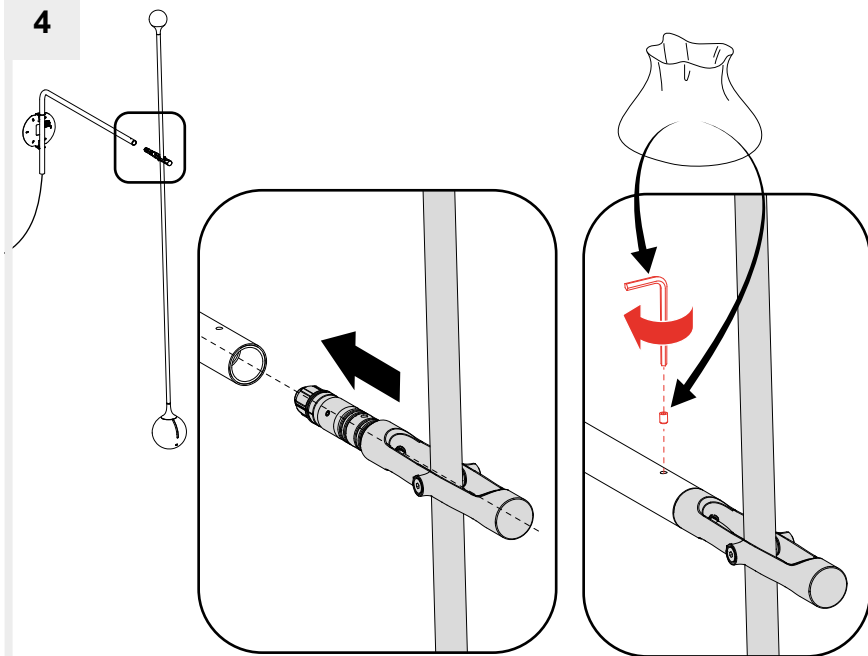
1100 N

ONLY FOR
USA / CANADA

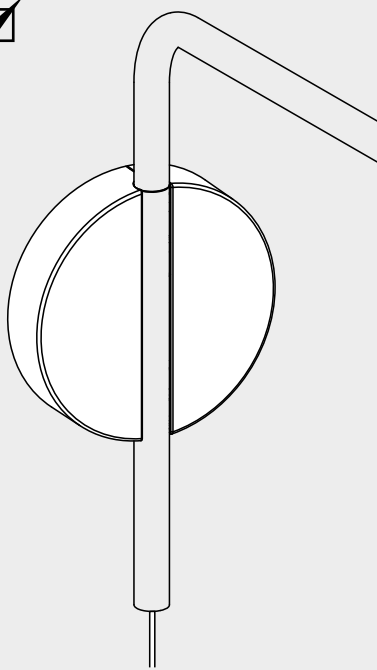
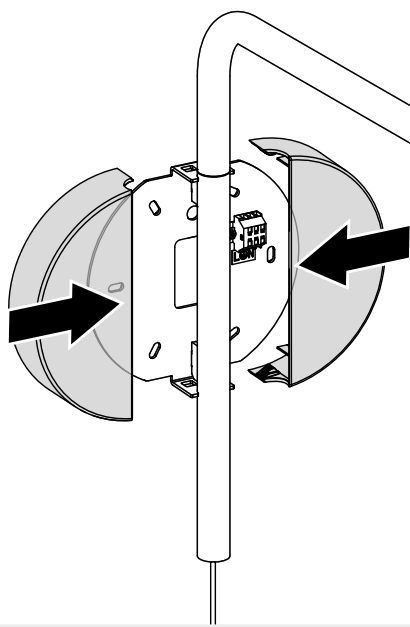


1200 N

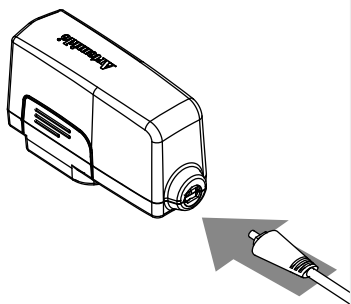
4



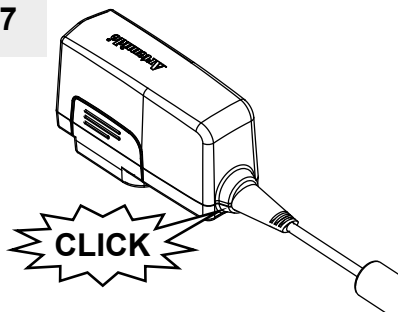
5



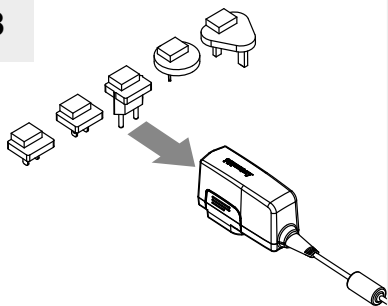
6



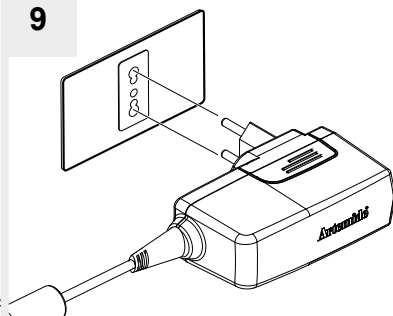
7



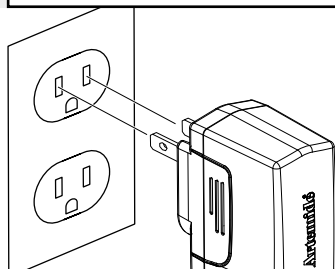
8

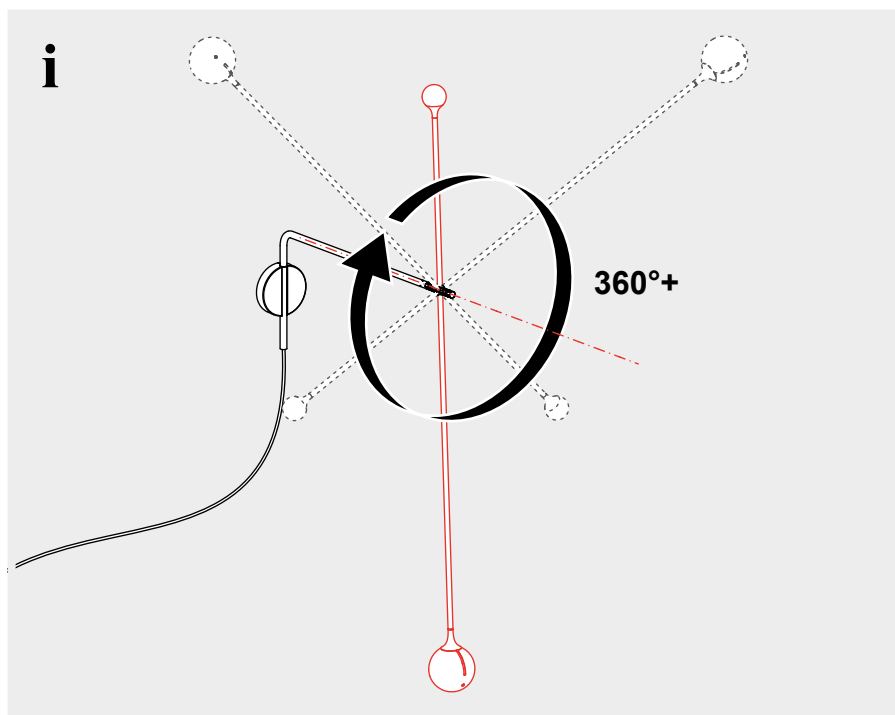
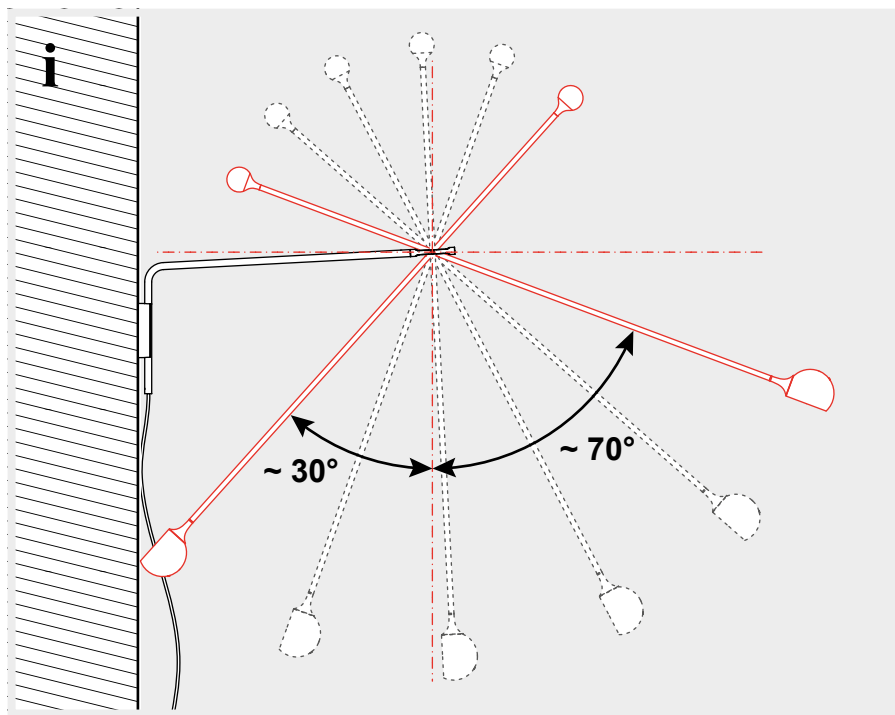


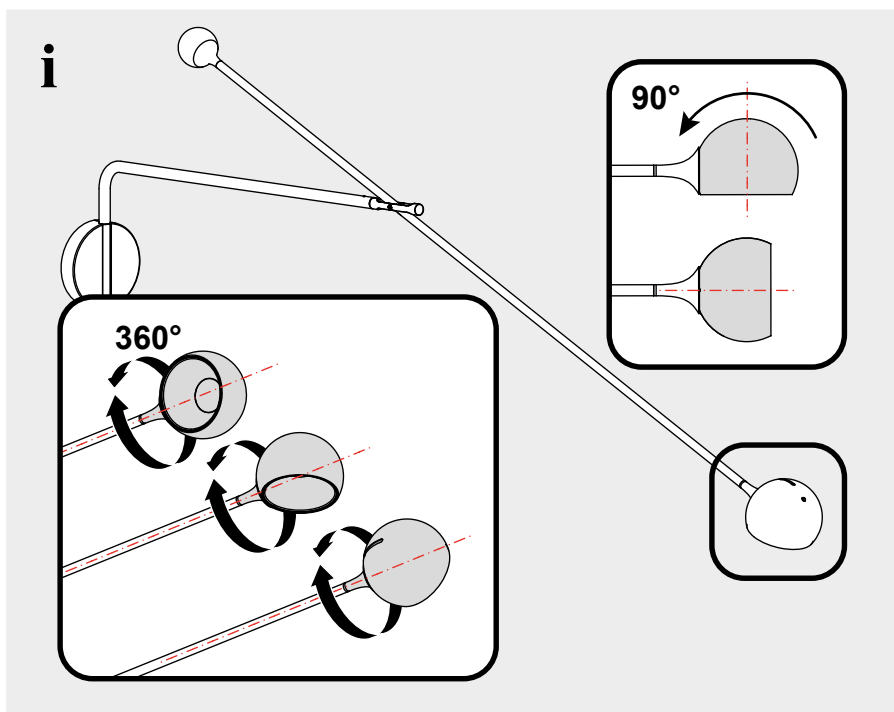
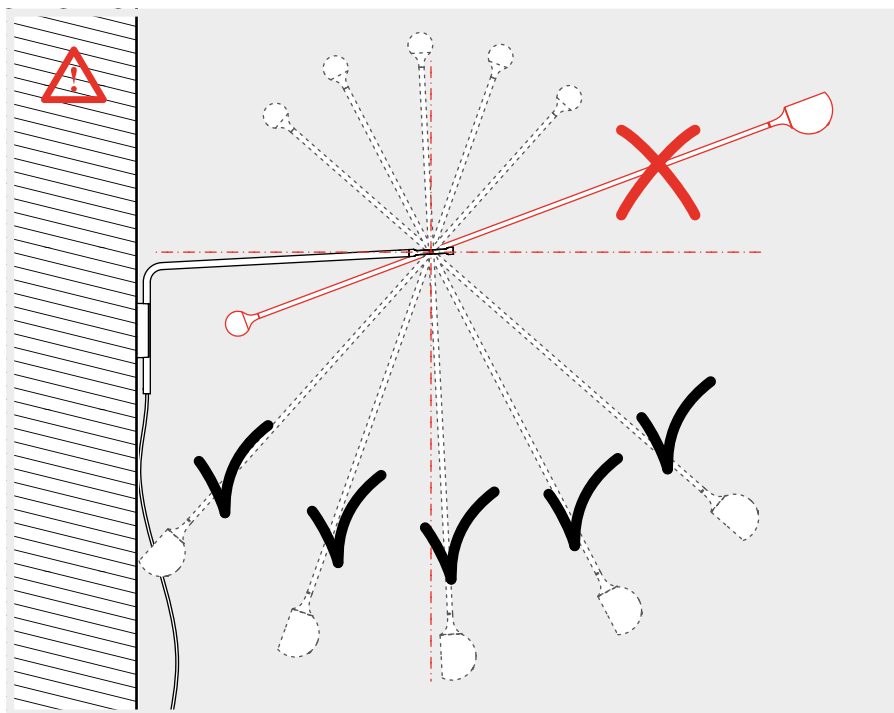
9

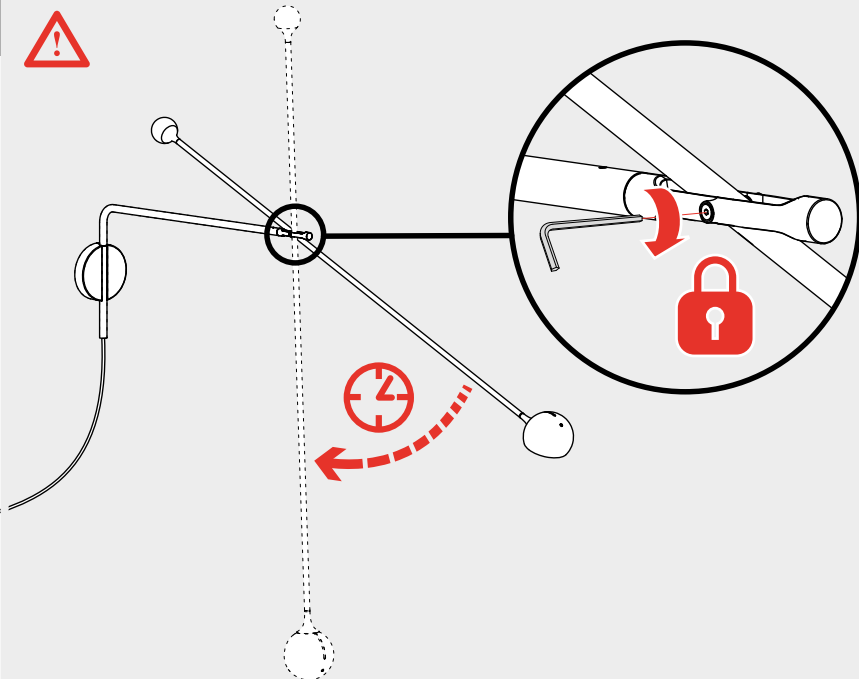
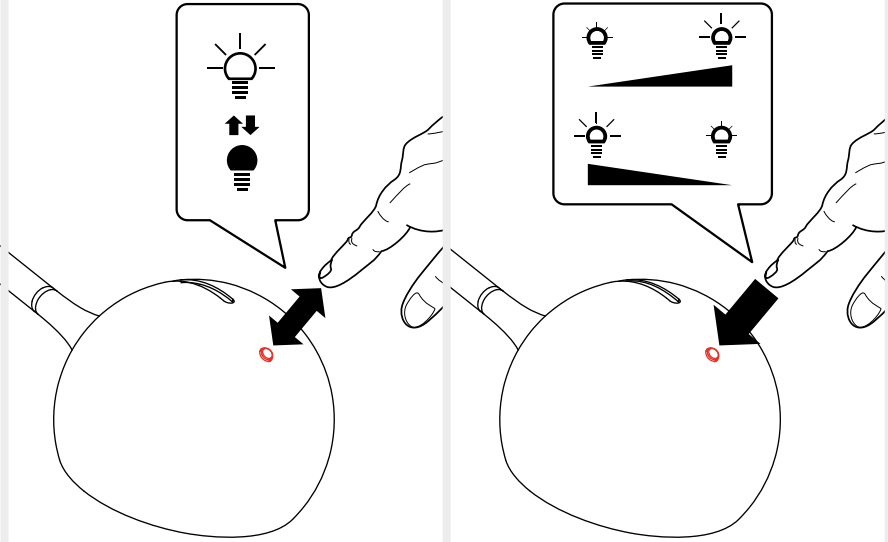


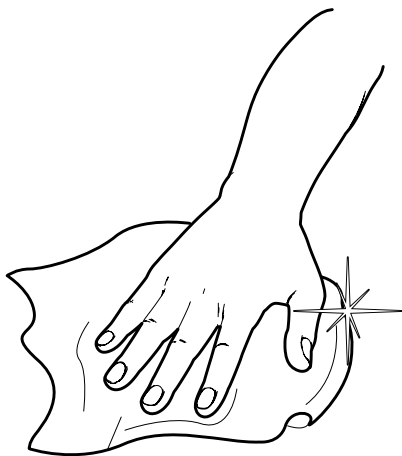
10 **For USA / Canada only**



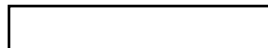








Artemide®



Artemide

via Bergamo, 18
20006 Pregnana M.se (MI)
ITALIA

tel. +39 02 935 181
fax +39 02 935 90 254
fax +39 02 935 90 496

www.artemide.com

VAT IT00846890150

Artemide Inc.

250 Karin Lane
Hicksville, NY 11801

tel. 631 694 9292
Toll Free 1-877-Art-9111
Fax 631 694 9275

www.artemide.net

cod. Y513002100